

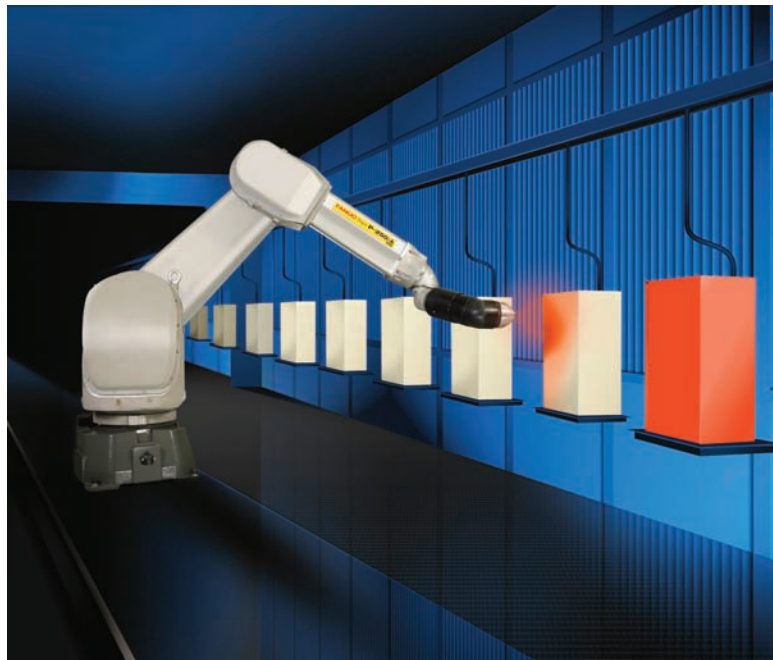
P-250iA/10S™

Basic Description

FANUC Robotics' P-250iA/10S is a mid-size painting robot with industry's best work envelope and motion performance. The P-250iA/10S is designed for efficient process equipment integration with features such as a hollow wrist and option for two motors on the outer arm for gear pumps, an outer arm designed for easy integration of paint application equipment, and multiple hose routing options. This provides increased throughput and spraying time which improves transfer efficiency.

Features and Benefits

- Floor, invert and wall mounting options permit versatility when unusual workpiece access is required.
- Patented, production proven, hollow wrist and through-arm hose routing provide a clean application environment.
- Options for either in-arm gear pump or mounting space for an in-arm flow meter and color valves provide fluid delivery flexibility with minimized color change time and material waste.
- FM and CE Mark Hazardous approved for Class I and II, Div. 1, Groups C,D,E,F,G environments.
- TIIS approved.
- Flex field hose makes for fast installation.
- Alternate Roxtec CF seal for CE Mark and TIIS installation.



- Ability to “flip-over” axis 2 and 3 to provide a very large work envelope and maximum flexibility for painting.
- Payload sized to carry a variety of applicators including conventional and electrostatic air spray guns and rotary atomizers.
- Optional ROBOGUIDE® PaintPRO™ software is a user-friendly Windows®-based graphical programming interface for creating, viewing, editing and simulating robot programs.

Reliability and Maintenance Advantages

- Designed for painting environment
- 12th generation paint robot designed with production proven reliability

- Internally and externally sealed wrist
- Large wrist aperture

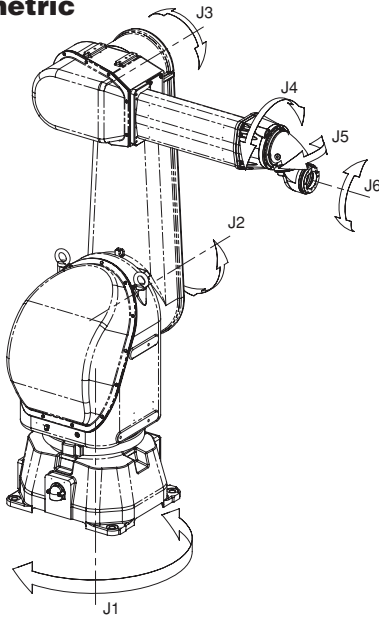
Software

- Line tracking
- Automatic color change
- Analog parameter control
- Integral two-component variable ratio or one-component pump control
- ACCUFLOW™ closed loop fluid control for paint applications
- AccuChop™ closed loop fluid control for FRP applications
- Collision Guard™

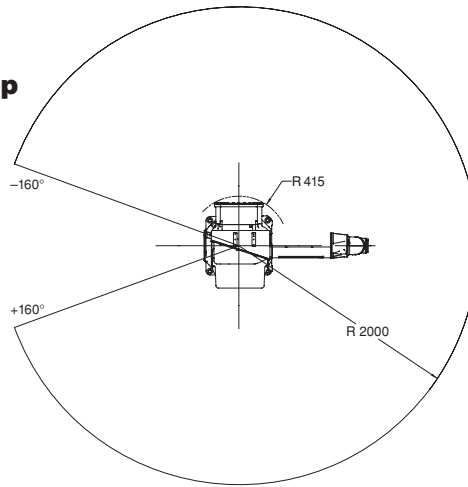
FANUC
Robotics

P-250iA/10S Dimensions

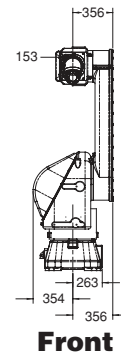
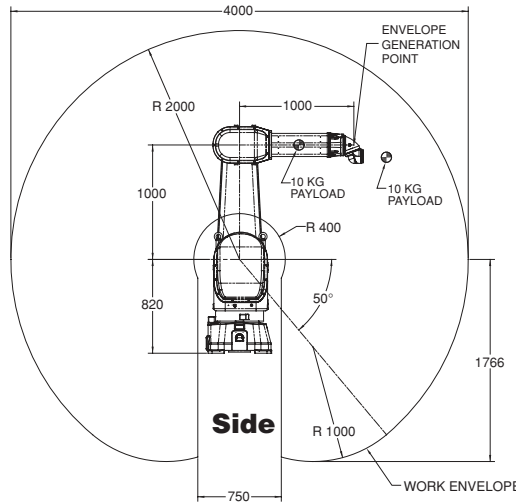
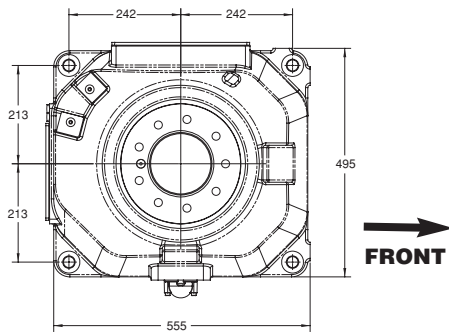
Isometric



Top



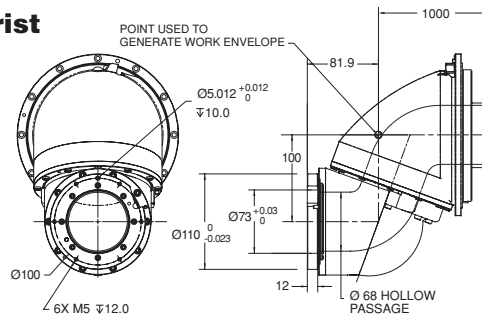
Footprint



P-250iA/10S Specifications

Items		
Motion range ⁽¹⁾ (degrees)	J1	320
	J2	280
	J3	310
	J4	1080
	J5	1080
	J6	1080
Motion speed ⁽²⁾⁽³⁾ (degrees/s)	J1	160
	J2	160
	J3	160
	J4	375
	J5	430
	J6	545
Coating speed (mm/s)		1500
Wrist payload ⁽⁴⁾ (kg)		10
Outer arm payload (kg)		10
Repeatability (mm)		±0.2
Mechanical brakes	Axes 2, 3 (optional 1,4,5,6)	
Certification	FM, CE Mark, TIIS	
Weight (kg)		495

Wrist



Note: Dimensions are shown in millimeters.
Detailed CAD data are available upon request.

Intelligent Robot Solutions



FANUC Robotics America, Inc.
3900 W. Hamlin Road
Rochester Hills, MI 48309-3253
(248) 377-7000
Fax (248) 377-7362

Charlotte, NC
(704) 596-5121

Toronto, Canada
(905) 812-2300

Chicago, IL
(847) 898-6000

Montréal, Canada
(450) 492-9001

For sales or technical information, call:
1-800-iQ-ROBOT • 1-800-47-ROBOT

Cincinnati, OH
(513) 754-2400

Aguaascalientes, Mexico
52 (449) 922-8000

Los Angeles, CA
(949) 595-2700

Sao Paulo, Brazil
(55) (11) 3619-0599

marketing@fanucrobotics.com
fanucrobotics.com

Toledo, OH
(419) 866-0788

Notes:

- (1) Optional wall mount J1 (90 degrees)
- (2) Optional high speed wrist (550, 550, 710 degrees/s)
- (3) Optional wall mount J1 (140 degrees/s)
- (4) At 300 mm axial, 50 mm radial offset. Please contact FANUC Robotics for high speed wrist payload.